

*Truly,
McKenna*

Just Add Stitches!

Beach Walk



Tall Tote - Second Edition

14" x 16"

Designed by Michelle Pratt,
Exclusively for McKenna Ryan

This tall tote is great for your tall rulers and outside pockets for scissors, rotary cutter for quilt class or a loaf of French bread and bottle of wine for the beach... Either way you will be in style!

Materials Needed:

- Beach Walk Truly McKenna Art Print Panel: Summer Rental (BW07-P)
- Fabric 1: AYC-16319-333 Sea Glass - ½ yard for backing and pocket
- Fabric 2: AYC-16319-143 Coral - ½ yard for pocket lining and tote handles
- Fabric 3: AYC-16317-143 Coral - ½ yard for bag lining
- Package of *Bosal In-R-Form Plus* Foam Stabilizer Double Sided Fusible
- 16" x 10" piece of fusible fleece

Before Getting Started:

- Use a ¼" seam allowance
- RST – Right Side Together
- Parchment Paper to place underneath fusible foam

Preparing Panel and Fabric:

- Trim Art Print Panel to 15½" x 22"
- Fabric 1:
 - Cut one - 15½" x 22" rectangle for backing
 - Cut one - 15½" x 10" rectangle for pocket front
- Fabric 2:
 - Cut one - 15½" x 11" rectangle for pocket lining
 - Cut two - 5" x 28" strips for handles
- Fabric 3:
 - Cut two - 15" x 20" rectangle for lining
- *Bosal In-R-Form Plus*:
 - Cut two - 15½" x 22" rectangles
 - Cut two - 2½" x 28" strips for handles



Tote Bag Front and Back:

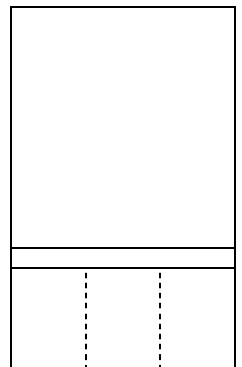
1. Fuse the panel and backing fabric each to an *In-R-Form Plus* 15½" x 22" rectangle.
2. Quilt the panel as desired. Use some decorative thread to highlight a few of the flowers.
3. Quilt the tote back with a cross-hatch pattern.
4. After desired quilting is done, trim both the Art Print and tote backing to 15" x 20". Trim from the bottom of the quilted pieces.

***Hint:** Use parchment paper under the double sided fusible foam when fusing to fabric to protect your ironing board. It peels right off after it cools!

Pocket:

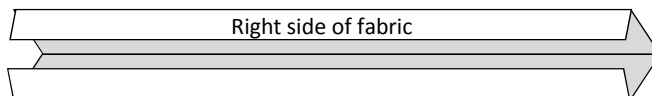
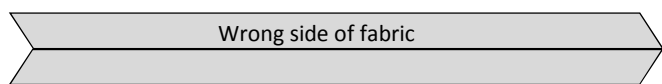
1. Fuse Fabric 1 - 15½" x 10" rectangle to fusible fleece.
2. With RST, sandwich fused rectangle with Fabric 2 lining rectangle.
3. Sew ¼" along the top edge.
4. Wrap the lining fabric around the ¼" seam to create a binding edge. Top stitch between the binding edge and pocket front. Quilt pocket with a cross-hatch design or a decorative stitch.
5. Trim sides and bottom to 15" x 10". Line quilted pocket up with the edges and bottom of the quilted tote back. (Right sides facing up on both pieces.) Sew in place very close to edges to secure pocket to back of bag.
6. Section off the pocket in 5" segments and top stitch to create three pockets.

Tote Back Pocket



Handles:

1. Iron the handle strips in half lengthwise, open, then iron edges toward the center line.
2. Open and place the 2½" x 28" piece of fusible foam in center, fold edges back to the middle and fuse with iron.
3. Then fold stripe in half again encasing all raw edges and creating a 1¼" - wide handle.
4. Sew ¼" seam down both sides of handles and three down the center to create a ribbed look.
5. Trim handles to 26".
6. Right sides facing you - Measure 3" in on the left and right of the top tote front and back pieces. Secure handles with a scant ¼" seam. (Make sure your handles are not twisted.)



Assembly:

1. RST layer the front and back pieces of tote. Sew ¼" around sides and bottom, make sure handles do not get caught in the seam.
2. Draw 3" squares on the bottom corners of the tote. Cut the squares out.
3. Bring the side seam and bottom side seam together. Pin along edges and sew a ¼" seam. This creates a boxed corner for tote. Repeat on other side. ***Do not turn bag right side out.**
4. Repeat above steps 1-3 for lining. RST, sew sides and bottom (leaving a large opening for turning the tote right side out) and make boxed corners.
5. Turn lining right side out.
6. Place lining with RST inside tote, matching the side seams and pin along edges of tote securing lining. Make sure the handles are out of the way and sew around top of bag. Back tack at handles to reinforce.
7. Turn bag inside out through bottom opening of lining. Stitch lining closed and tuck lining inside bag.
8. Using the tip of your iron, fuse the top edge of bag to inside on the double sided fusible to get a nice clean edge. Top stitch ¼" from the edge on outside of bag. Enjoy your Tall Tote!

